



VILLA SERENA
VALE DO LOBO





A recently built six bedroom villa near the Ria de Alvor between Portimão and Lagos.

The interiors are comprised of the spacious living / dining area, large equipped kitchen with centre island, cloakroom, office and six bedroom suites.

The basement has a very large open plan area and a bathroom.

The pool is south facing with a lawn garden surrounding. There is plenty of covered & uncovered space for outdoor dining, sunbathing & lounging.



Six bedrooms- all en-suite

BBQ

Jacuzzi

Heated pool

Solar panels

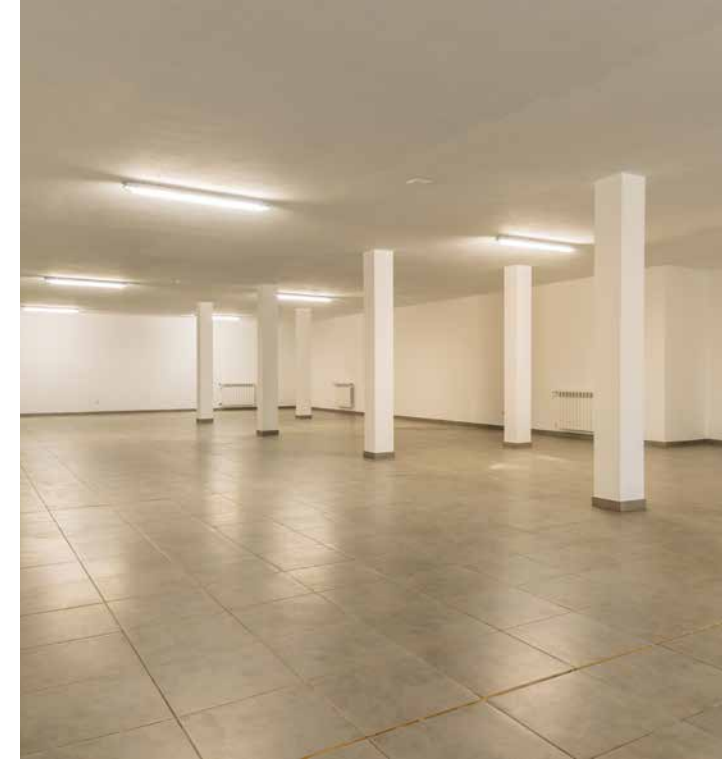
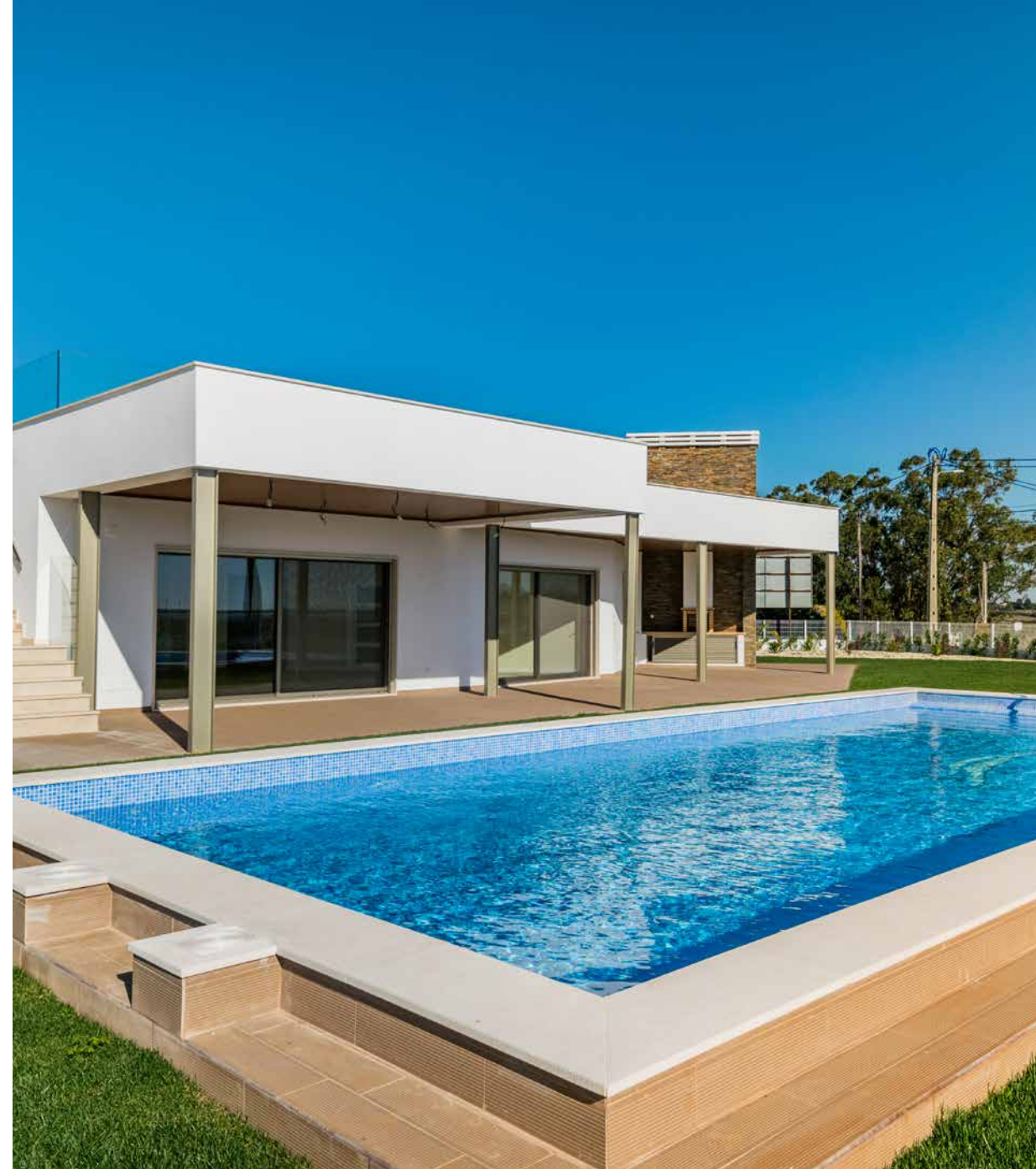
Under floor heating

Borehole

Built: 480 sq.m.

Plot: 4.500 sq.m.

2.300.000€





waratah.pt
sales@waratah Algarve.com
+351 289 358 316

